

# SNOW DEFENDER™

Patented

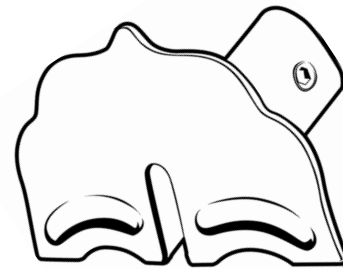
# 6500

## Installation Instructions

The Snow Defender™ 6500 is for standing seam roofing only. It is designed to fit standing seam panels in seam width up to 3/8" and most 1" to 1-3/4" high. It is not designed for seams below 1". Using a 7/32" hex bit unscrew the set screws till they are flush on the inside wall. Place the guard on the seam of the roof. The snow guard blade needs to be towards the eave. With your hand, apply even pressure on the top of the 6500. Torque all set screws in an alternate fashion. Set screws are to be torqued at a maximum of 220 inch pounds.

*Note: Most electric & cordless drills will not achieve 220 inch pounds. It is recommended to use a torque wrench.*

Towards ridge

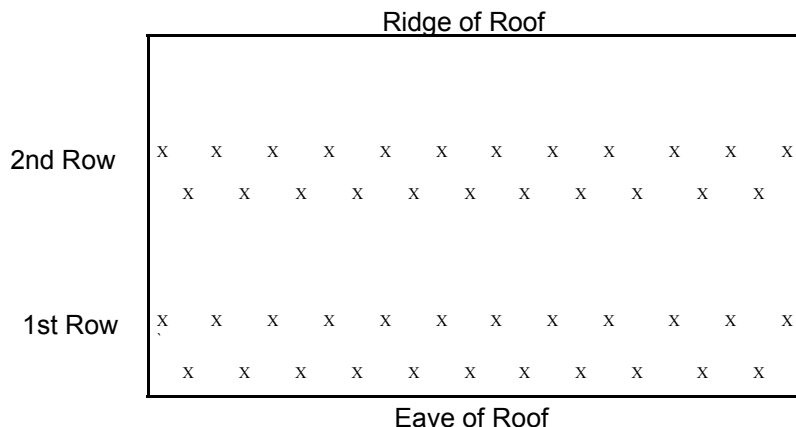


Face plate towards the eave.

*Failure to install an adequate amount of snow guards and in the proper pattern will void the warranty. Visit [www.snowdefendercalculator.com](http://www.snowdefendercalculator.com) to use our snow guard calculator to determine the amount needed.*



For warranty details visit [www.snow-defender.com](http://www.snow-defender.com)



*Above example is based on Metal Roof Panels being 36" Panels with 9" rib spacing.*

**Remember it is very important to install the guards properly with the correct quantities. Do not only put snow guards over doorways, walkways, etc.**



137 Newport Rd  
Leola PA 17540  
877-897-7020

[www.levisbuildingcomponents.com](http://www.levisbuildingcomponents.com)