



TERRA COTTA

COLONIAL RED

REGAL RED \*

BURGUNDY \*

PATINA GREEN

HEMLOCK GREEN \*

HARTFORD GREEN \*

EVERGREEN

SLATE BLUE

REGAL BLUE \*

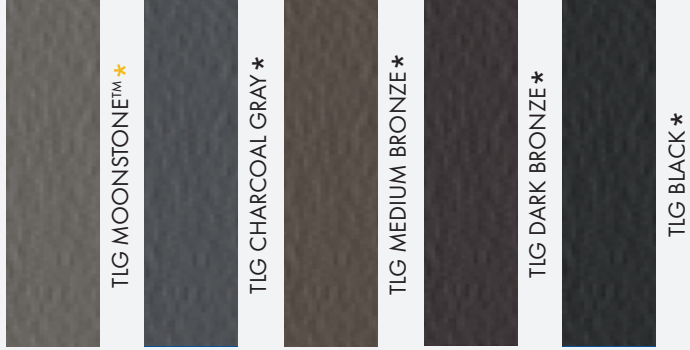
SOLAR WHITE

REGAL WHITE

STONE WHITE

SURREY BEIGE

SIERRA TAN



TLG MOONSTONE \*

TLG CHARCOAL GRAY \*

TLG MEDIUM BRONZE \*

TLG DARK BRONZE \*

TLG BLACK \*

**CORELINE** TEXTURED LOW-GLOSS (TLG) PVDF COLORS



TLG BLACK



ASH GRAY



MEDIUM BRONZE



REGAL BLUE

**24-GAUGE PVDF COLORS**



Tri-State Components  
 84 Buffalo Rd.  
 Sparta, NC 28675  
 336-372-6260

[www.tristatecomponents.com](http://www.tristatecomponents.com)



See our colors on your roof or wall with our Color Visualizer!

Scan the QR code on the left or visit [qrco.de/bbxEie](http://qrco.de/bbxEie) to get started.

STEP 1: Take a picture of your property.

STEP 2: Upload your image.

STEP 3: Find your perfect Sheffield Metals color!

\* Available at a slight price premium \* Metallic premium \* Weathered premium

Oil canning is an aesthetic issue and is an inherent part of light gauge cold formed metal products. By using coil that has been processed properly, designing for thermal movement, following stringent specifications for installation and proper handling most oil canning can be minimized. Oil canning is not grounds for coil/panel rejection.

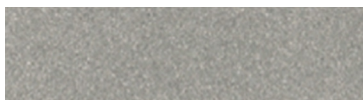


Sherwin-Williams® is a trademark of SWIMC LLC.



SpecLink

SILVER \*



COPPER \*



SANDSTONE

ASH GRAY

DOVE GRAY

SLATE GRAY

CHARCOAL GRAY

BURNISHED SLATE

MEDIUM BRONZE

MANSARD BROWN

DARK BRONZE

MATTE BLACK

VINTAGE® \*

PRE-WEATHERED GALVALUME® \*

COR-TEN AZP RAW® \*

CHAMPAGNE \*

ACRYLIC-COATED GALVALUME®